



**doka**

The Formwork Experts.

## Doka-OptiX

The release agent especially  
for smooth form-facings

[www.doka.com](http://www.doka.com)

## The release-agent specially designed for smooth form-facings

---

Doka-Optix has an excellent separating effect and enhances bright, low-porosity concrete surfaces thanks to the special chemical composition of the emulsion.

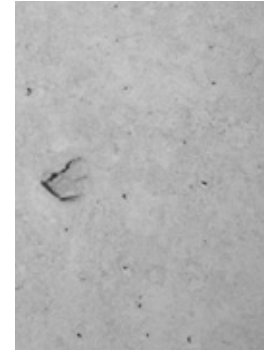
### Less porous concrete surfaces

achieved by the mode of action of the emulsion

- easy application by spraying on without wiping off
- bright, low porosity concrete surfaces due to the chemical composition of the emulsion
- 'ready' indicator rules out incorrect use – pouring can begin as soon as the white colour has disappeared
- sprayable even during light rain and down to -4° C
- ready for use up to 14 days after application
- eco-friendly, due to biodegradability



**Doka Optix**



**Conventional release agent**



**Doka-OptiX enhances pore-free concrete surfaces and enables excellent fair-faced concrete results. City tunnel Leipzig and train stations, Germany**