



Pouring Concrete Slabs?

We got *deck*
your ~~back~~.



shop.doka.com

Buy formwork quickly and easily online!

Formwork & Scaffolding.
We make it work.

Handset

Designed for strength, versatility, and ease of use to optimize slab formwork operations, enhancing safety and productivity on site.

Handset, or prop & beam slab formwork systems are characterized by their use of adjustable props, beams, and hand-set components to create a stable framework for pouring concrete slabs. These systems allow for quick assembly, easy adjustments, and high load capacities, making them ideal for a wide range of construction projects.



↑ Dokaflex

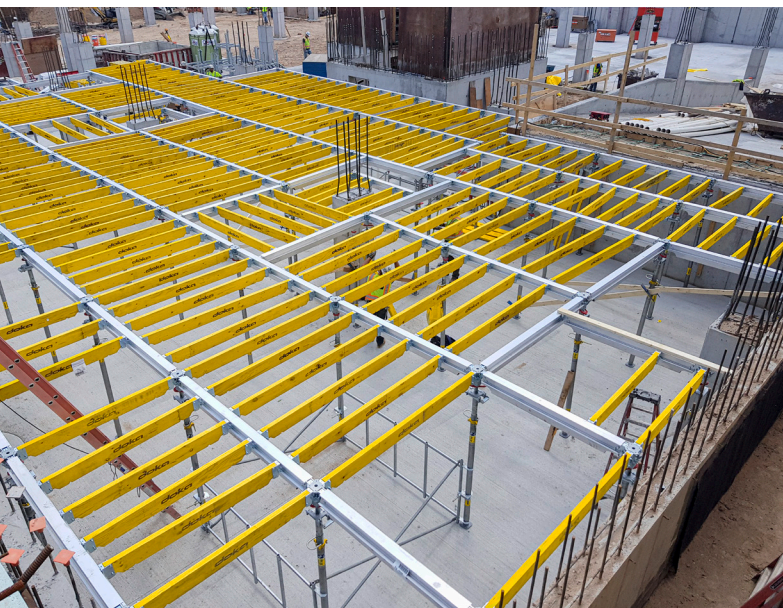
Flexible slab formwork system for any layout or concrete finish

Dokaflex is the fast, versatile floor-slab formwork for any desired deck layout. Any type of plywood can be used, so that any concrete surface finish can be achieved based on the requirement of the architect.

↓ SuperDek

Fast, safe and simple handset drop head slab system.

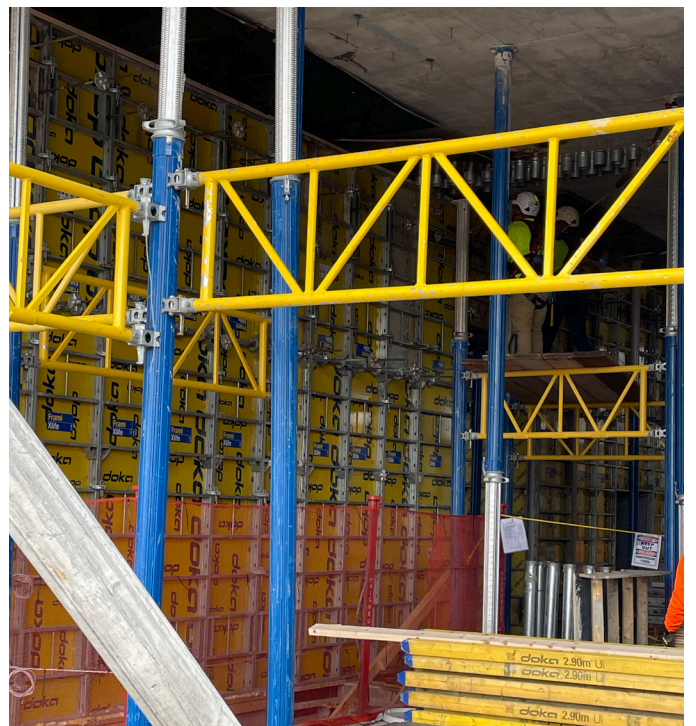
SuperDek is a simple handset drop head slab formwork system. Large grid / prop spacing, up to 8' x 8' (64sf), interlocking joists and stringers and a unique slab edge forming solution will provide increased productivity with less labor and maximum safety.



↓ Super Prop & Gates

Exceptional versatility and efficiency

By combining adjustable props with gates for easy horizontal assembly and vertical placement by crane. It supports high-load capacities and specific clearance heights, making it ideal for tall floor applications and adaptable to various shoring needs with minimal labor.



Tables

Designed to streamline the construction of large slab areas with speed and precision.

By utilizing pre-fabricated tables, these systems facilitate quick assembly, movement, and stripping of formwork, significantly boosting productivity and reducing labor costs.



↑ Dokamatic table

The unbeatably fast tableform that adapts perfectly to any slab designed to dramatically increase formwork handling production whenever medium and large floor slabs have to be cast. Standard accessories can be attached for easy and quick adaptation to changing requirements on site.

↓ DokaTruss table

An improved Table system solution for high speed construction

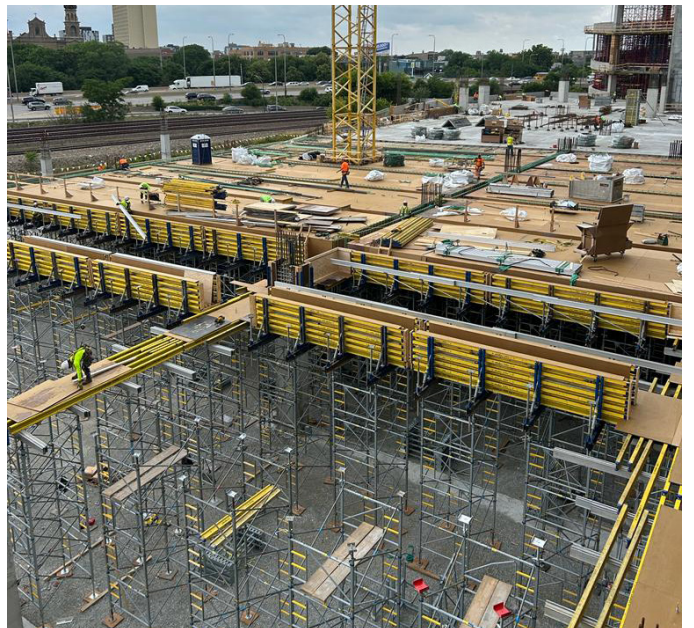
The DokaTruss table represents the fastest method to set and strip large slab formwork. This flying table form is a must to handle today's demand for high speed construction cycles.



↓ Superflex Garage Beam System

The flexible shoring solution designed for garage beam applications

It integrates seamlessly with Doka Super Props or Staxo 100, allowing for a range of height and load capacities. The system enables secure locking of frames for easy repositioning and adapts to various project needs, offering versatile design options and efficient use with additional shoring components.



Panelized

The versatile system for creating smooth, precise surfaces and complex shapes in concrete construction.

Unlike traditional formwork, which often requires labor-intensive assembly, panelized systems feature pre-fabricated panels that can be quickly and accurately assembled on-site.



↑ Dokadek 30

The beamless handset system for speed on site

Dokadek 30 is a beam-less, hand-set formwork system designed as a lightweight strip galvanized and cathodic dip painted steel frame faced with a wood/plastic-composite sheet.

Shoring

Shoring solutions designed to offer unparalleled strength and reliability.

Our advanced shoring systems are engineered to offer robust, reliable support for your slab formwork needs, ensuring a secure foundation for your projects and enhancing overall construction efficiency.

↓ 10k shoring

The proven load-bearing tower made of steel

Doka's 10k/leg shoring system is the proven method for shoring slabs at a wide range of heights and is especially effective for heights over 18 ft. Combining European technology with American methodology, the 10k system works well in conjunction with our Dokaflex and Dokamatic table systems.



↓ Load-bearing Staxo

The high-capacity, fast shoring system

With its rugged steel frames, Staxo 100 is designed for large shoring-heights and high loads.



Selecting the right system for your project

If your job has ...



Tall floors

Heavy loads & thick slabs

Handset requirements

Large forming area

Changing geometry



Super Prop & Gates

Super Prop & Gates

Dokaflex

DokaTruss

Dokaflex

Staxo 100

Staxo 100

SuperDek

Dokamatic tables

SuperDek

10k shoring

10k shoring

Dokadek 30

Superflex Garage Beam System

Super Prop & Gates



Strip formwork faster!

Concremote uses sensors to measure the temperature and calculates compressive strength of the concrete structure. Think construction processes forward and boost your productivity.



Choosing the right plywood

	Phenolic / Phenolic eco	MDO	HDO	Birch
Applications	Most common panel for loose shoring. ECO utilized on podium slabs, around columns, slab edges.	Medium reuse requirements where a matte finish is desired.	Architectural finish requirements, preassembled tables/trusses.	High reuse applications such as core climbers and preassembled tables/trusses.
Finish	Smooth/Glossy. Will have rippling/tiger striping	Matte	Smooth/Glossy finish with little to no woodgrain transfer.	Smooth and glossy finish. Will have rippling and tiger striping.
Reuses (horizontal loose shoring)	ECO 2-4, Phenolic 6-8+	6-8+	10-15+	15+
Safety/considerations	Recommend a water based release agent. Oil based will result in a very slick surface. Non absorptive overlay reduces quantity of release agent needed. Pencil marks are not as clear compared to marking an MDO.	The MDO overlay is better suited on sloped applications where the smoother phenolic may be problematic.	Recommend a water based release agent. Oil based will result in a very slick surface. Non absorptive overlay reduces quantity of release agent needed. Pencil marks are not as clear compared to marking an MDO.	Recommend a water based release agent. Oil based will result in a very slick surface. Non absorptive overlay reduces quantity of release agent needed. Pencil marks are not as clear compared to marking an MDO.
Benefits	Provides a similar reuse to MDO with a reduced cost. Utilized with HDO or birch where panels need to be cut, it provides a lower cost solution with a matching finish.	Hardwood face provides a very smooth MDO finish with above average reuse.	Glossy finish with no rippling. Applications for higher than MDO reuse needs.	Extremely long lifespan both in reuses and while exposed to the elements. Very Smooth finish.
Why from Doka?	Highest quality phenolic available in the market. Stocked in our yards it can be delivered with the shoring.	Our MDO overlay has some of the highest resin content available. Stocked in our yards it can be delivered with the shoring.	Assembled projects remove the need to purchase full units. Stocked in our yards it can be delivered with the shoring.	Assembled projects remove the need to purchase full units. Stocked in our yards it can be delivered with the shoring. Our international relationships ensure a steady supply.
Overall costs	5/10	6/10	7/10	8/10 (lowest cost per reuse)

